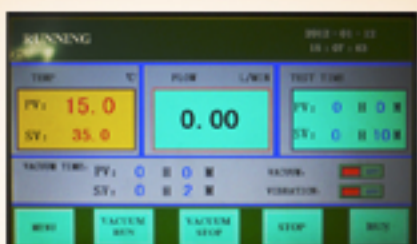




# Dust Test Chamber

*Dust Test Chamber is designed to simulate dust in controlled atmosphere. It aims to determine the degree of protection against harmful deposits of dust (IP5X) and against ingress of dust (IP6X). Numeral 5 allows a limited quantity of dust to penetrate the enclosure under certain conditions. Numeral 6 does not allow any dust to penetrate.*

There are mainly two kinds of test - (F) suspension dust & (C) flow dust, to test dust-resistance for safety of operation



## Features

- Exterior and Interior is non-magnetic stainless steel
- Large viewing window with extruder rubber wiper with rotating handle
- Special designed nozzle, uniform suspension dust
- Floating dust agitation with air velocity control by speed adjustable blower and motor
- Aerial current agitation with variable rpm blower motor and filtration of dust at sucking sections
- With shelf for easy to place specimen



## Standard

- IEC60529 DIN-40050 IP5X & IP6X, SAE-J575, ISO-20653 and IEC-60068-2-68 standards

Model	JTH-D-1000C	
Internal Dimension mm (WxDxH)	1000x1000x1000	
External Dimension mm (WxDxH)	1500x1200x2100	
Dust Test	Flow dust	
Test Application	IEC60529	
	IP6X	IP5X
Dust Concentration (mg/m3)	5000 above	100 above
Flow rate (m/s)	5	10
Test Cycling Controller	Time control	
	0 ~ 99 HR	
Power	220-240V ac 50/60Hz	



**Custom walkin dust chamber with temperature and humidity control**